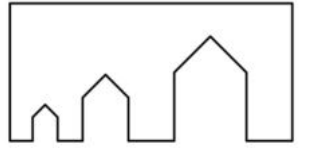


DÁNIAI KORTÁRS ÉPÍTÉSZET

Tornóczky Mónika, építész Építésztoábbképző Szabad szemmel: Dánia



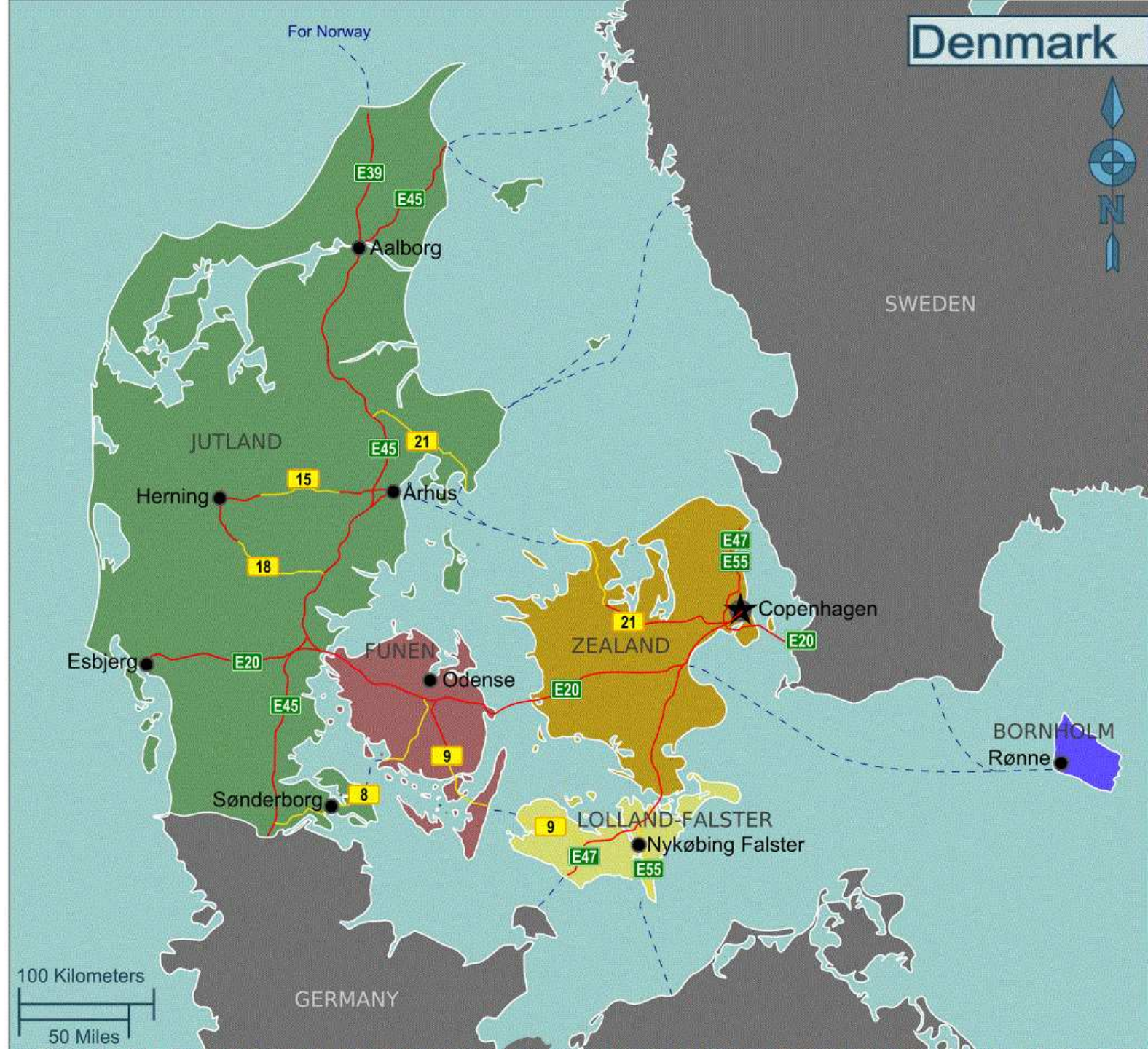
DÁNIA

területe 43 094 km²

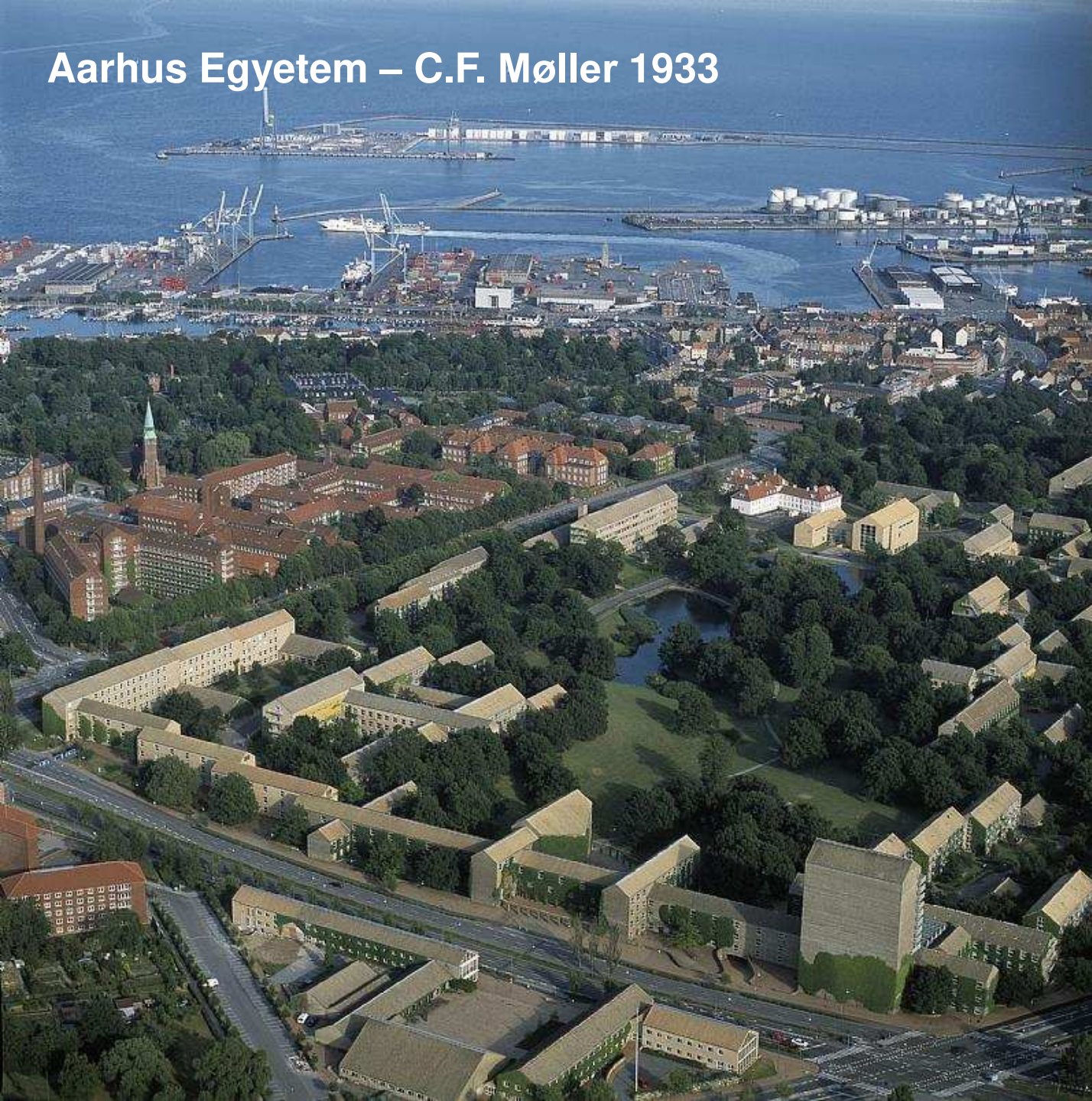
népesség: 5 882 000 fő

1 félsziget (Jylland) és

474 sziget



Aarhus Egyetem – C.F. Møller 1933



1933



1964



1995



2003



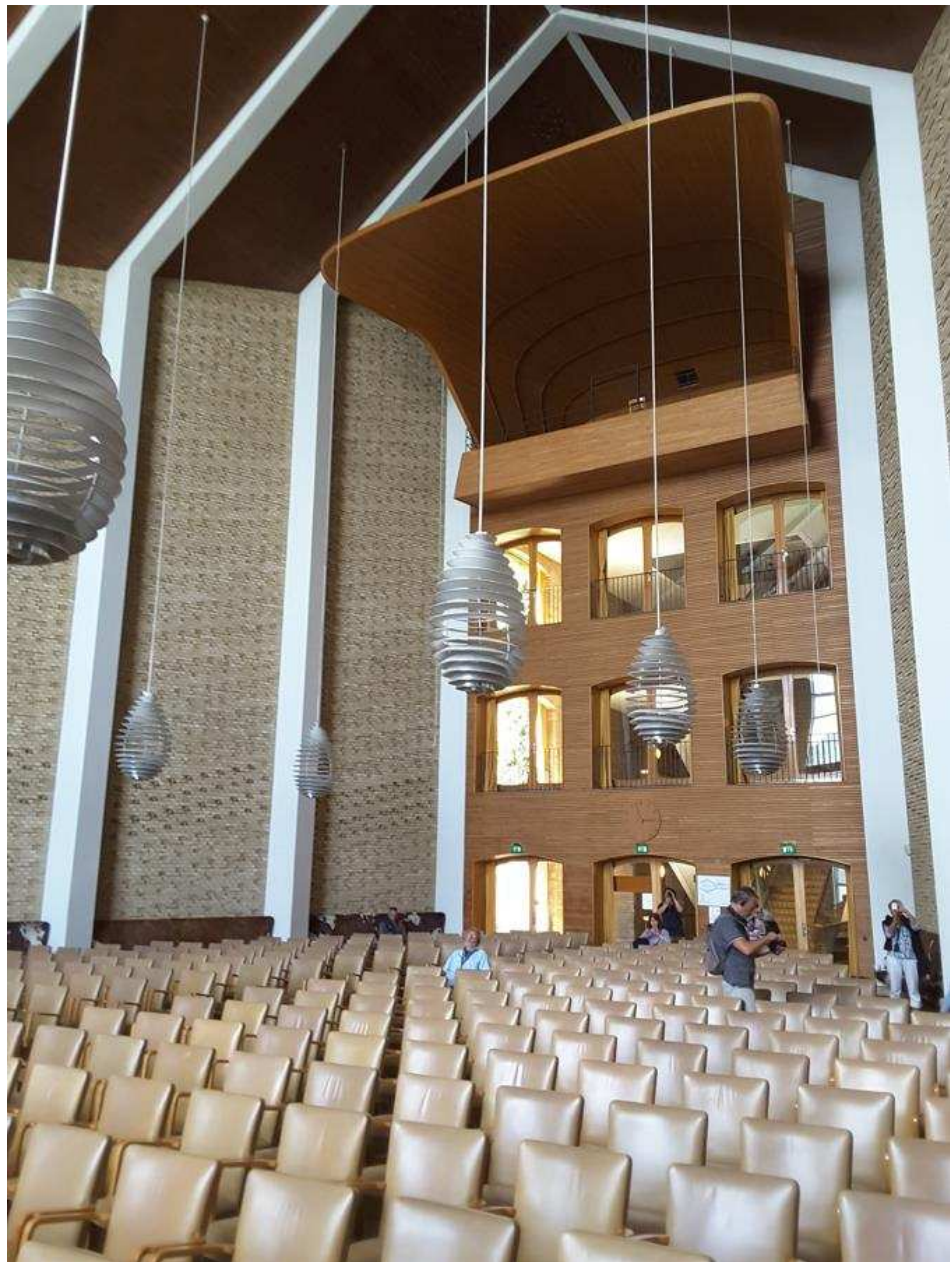
The diagrams show how the university campus has developed since 1933.

Aarhus Egyetem – C.F. Møller 1933

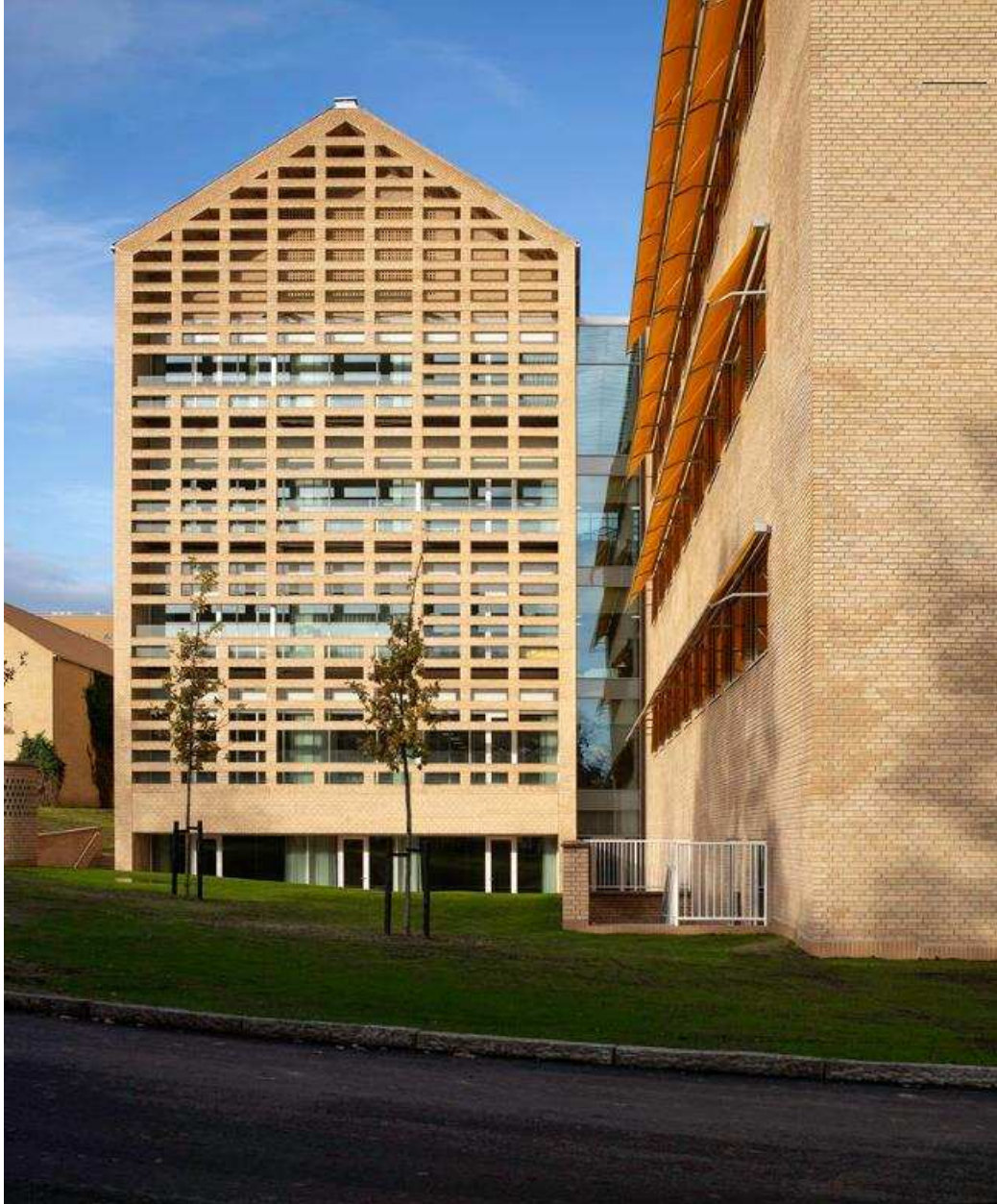




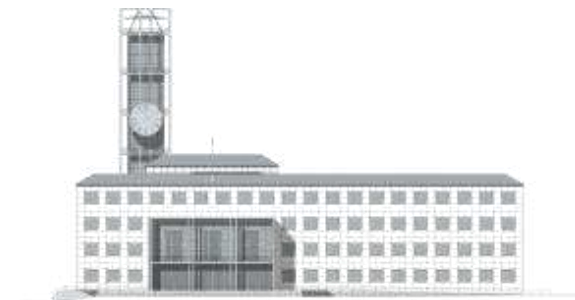
Aarhus Egyetem – C.F. Møller 1933



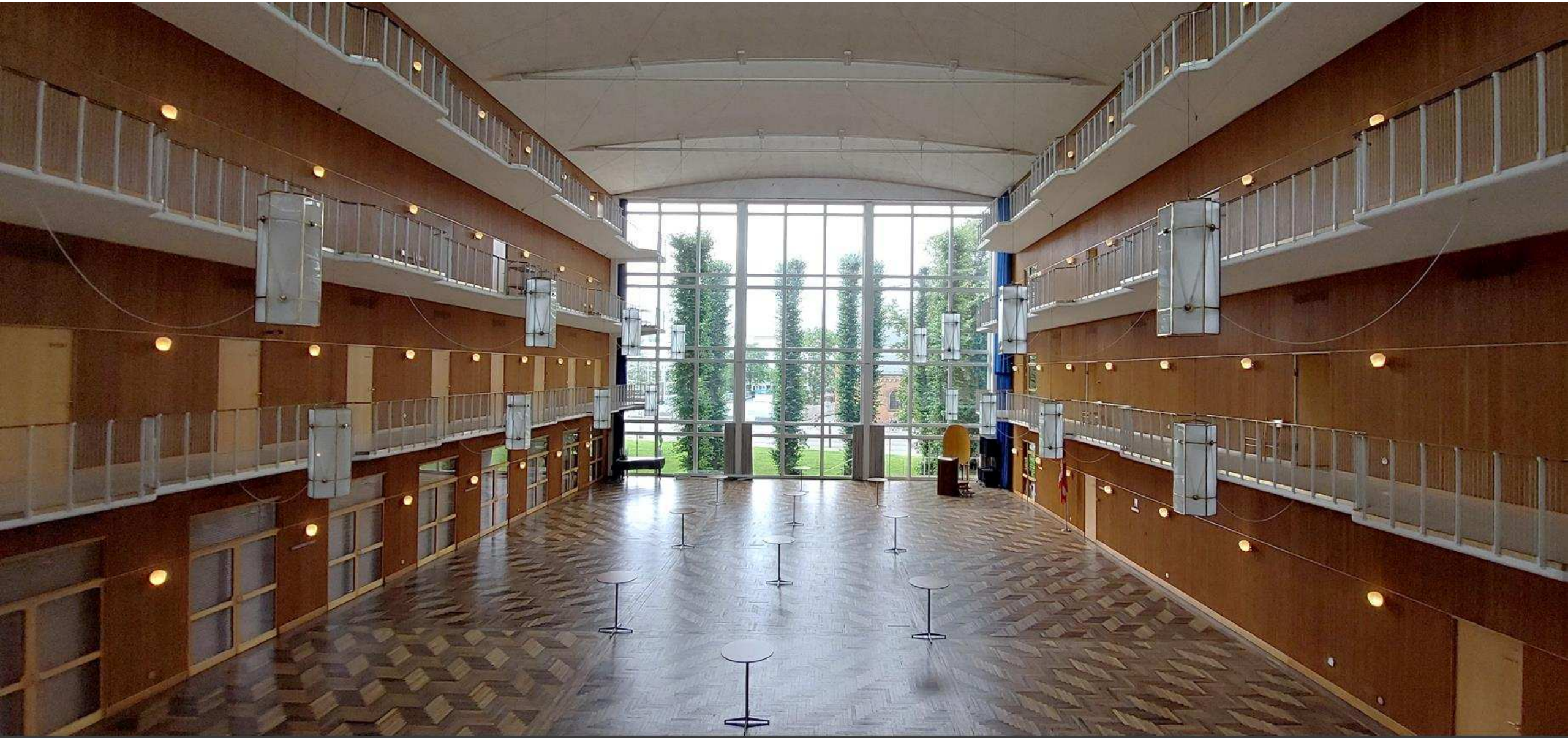
Aarhus Biomedicina épület – CUBO 2018



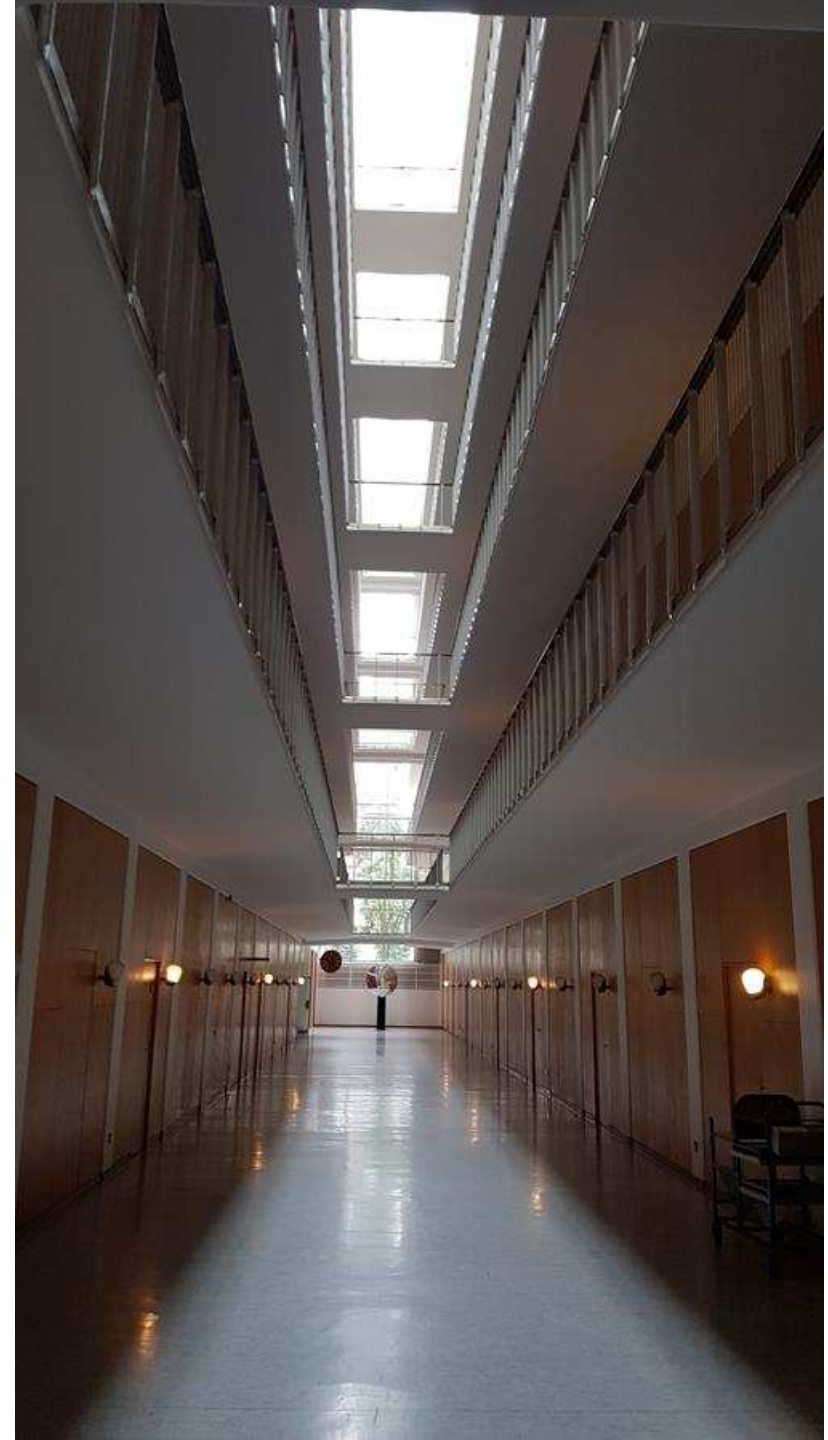
Aarhus City Hall – Arne Jacobsen, Erik Møller 1942



Aarhus City Hall – Arne Jacobsen, Erik Møller 1942



Aarhus City Hall – Arne Jacobsen, Erik Møller 1942





Aarhus City Hall – Arne Jacobsen, Erik Møller 1942





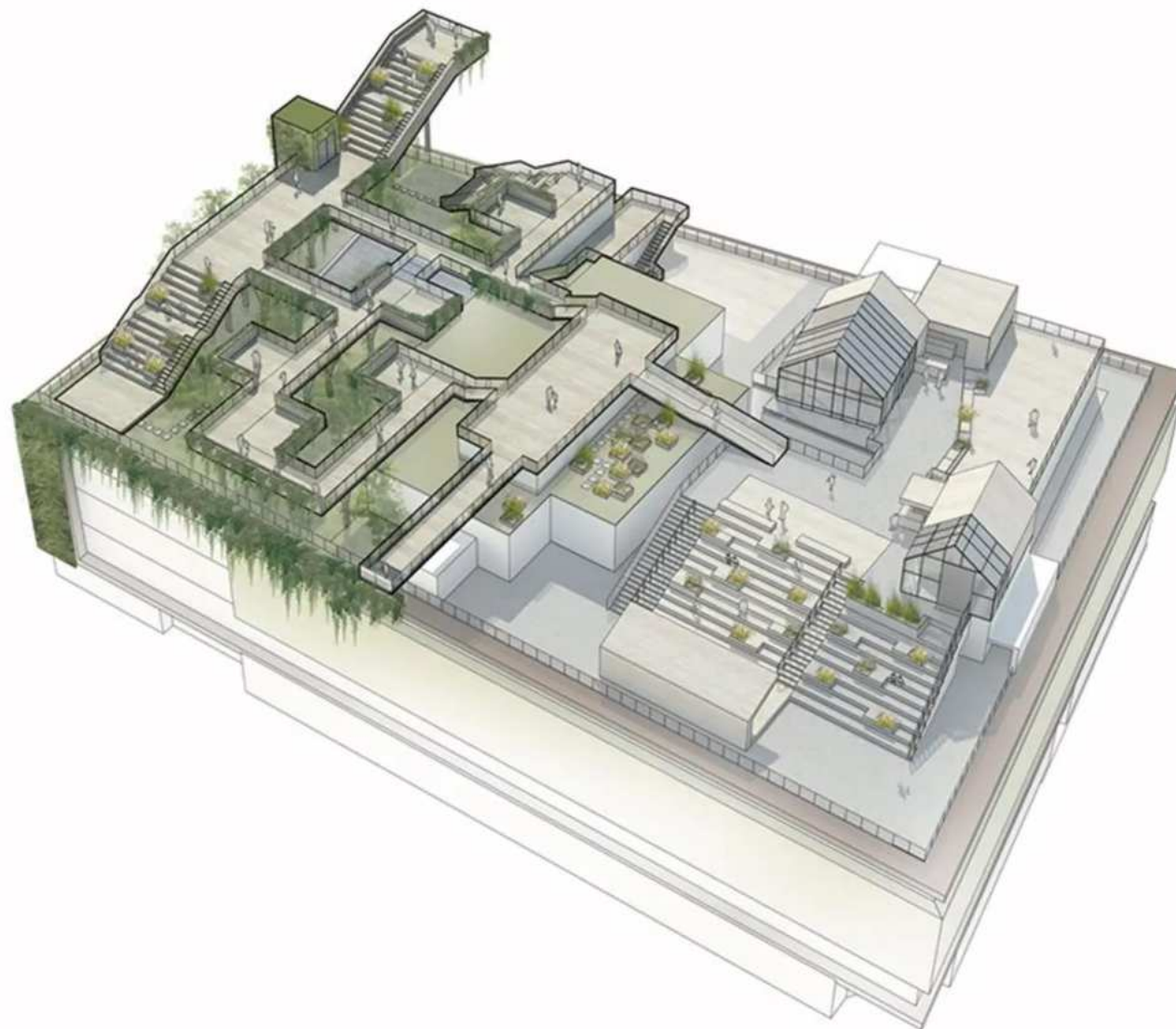
Salling Rooftop - Henning Larsen, 2022



Salling Rooftop - Henning Larsen



Salling Rooftop - Henning Larsen

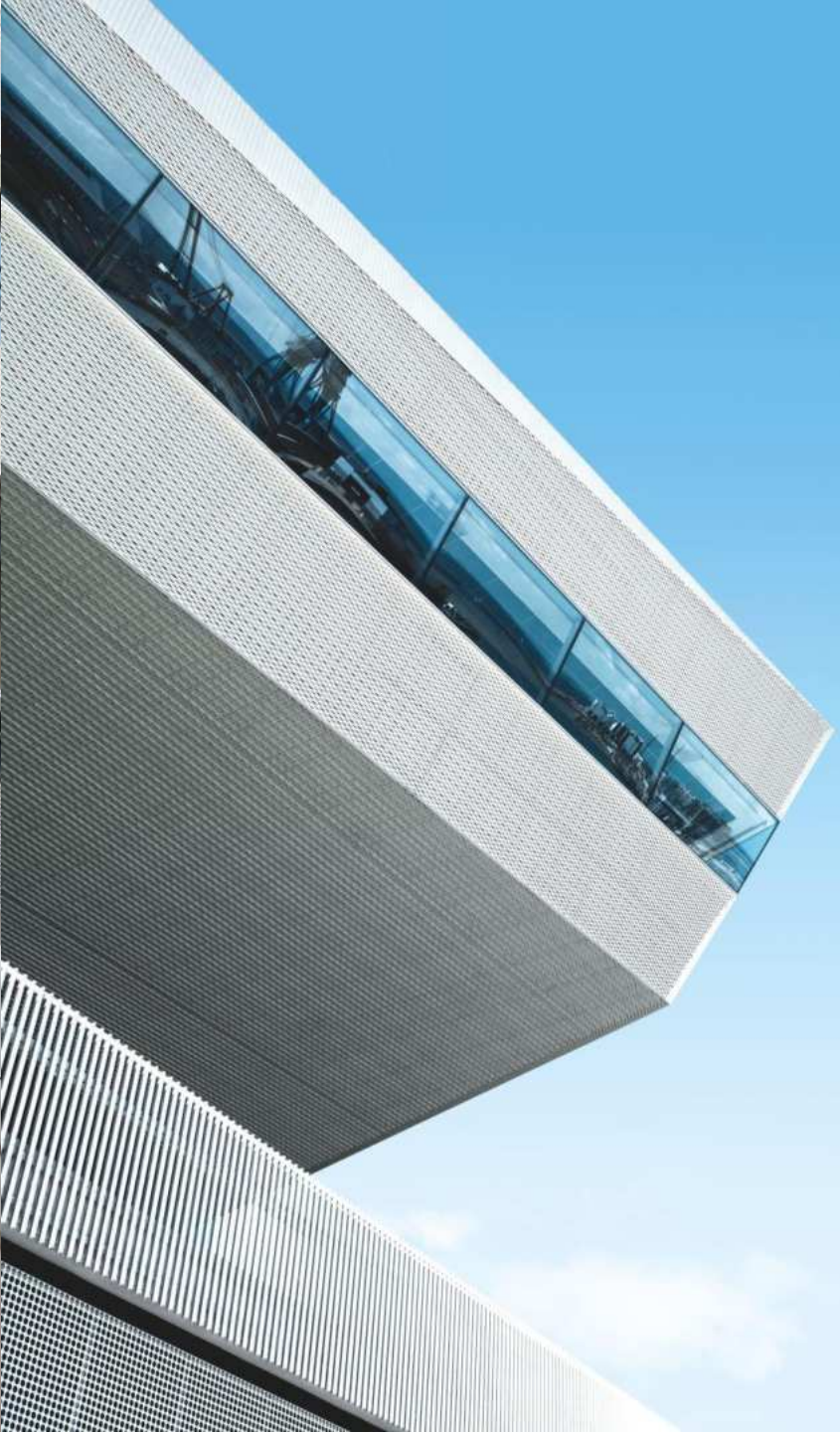


Salling Rooftop - Henning Larsen

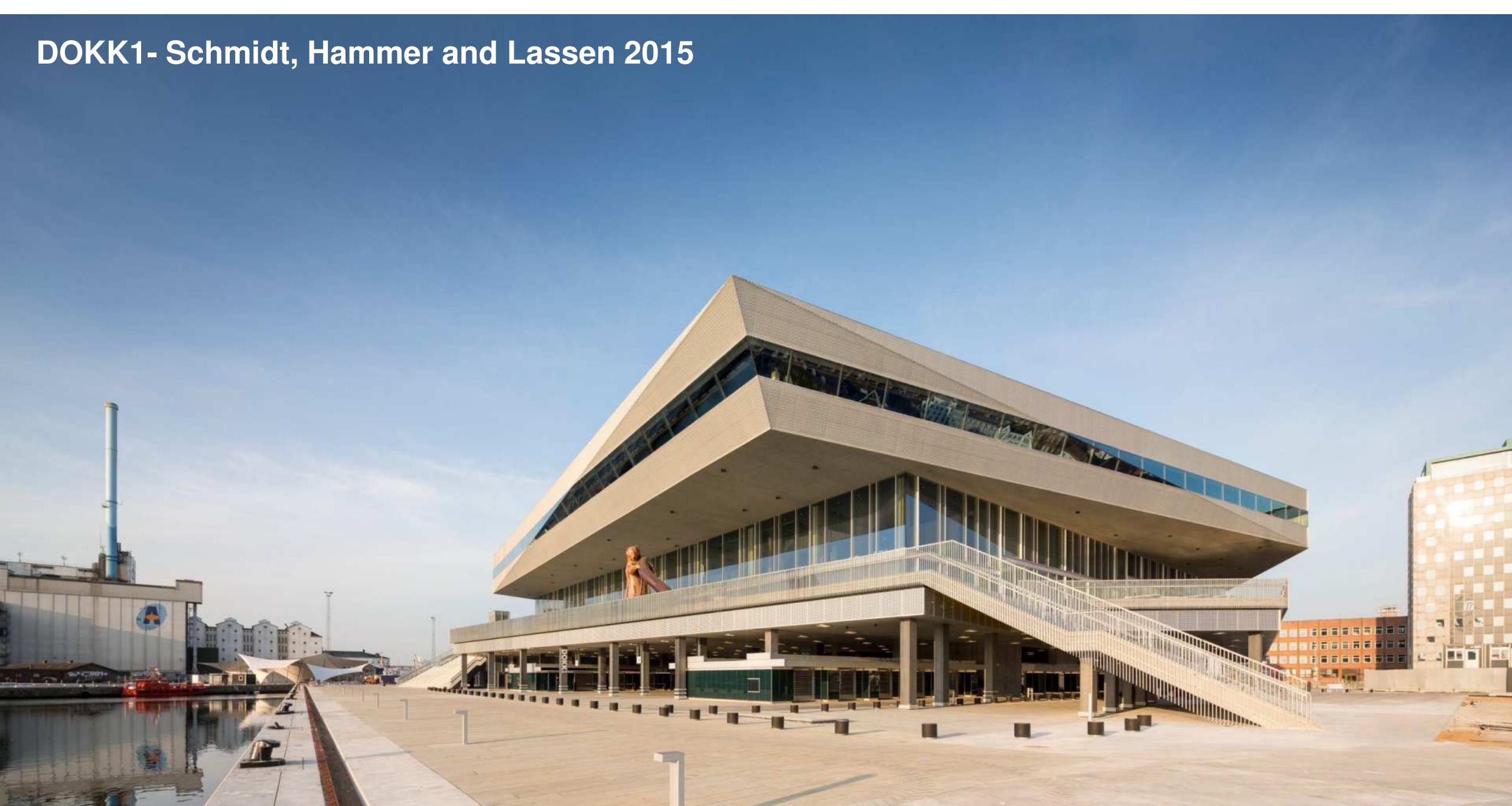


DOKK1- Schmidt, Hammer and Lassen 2015

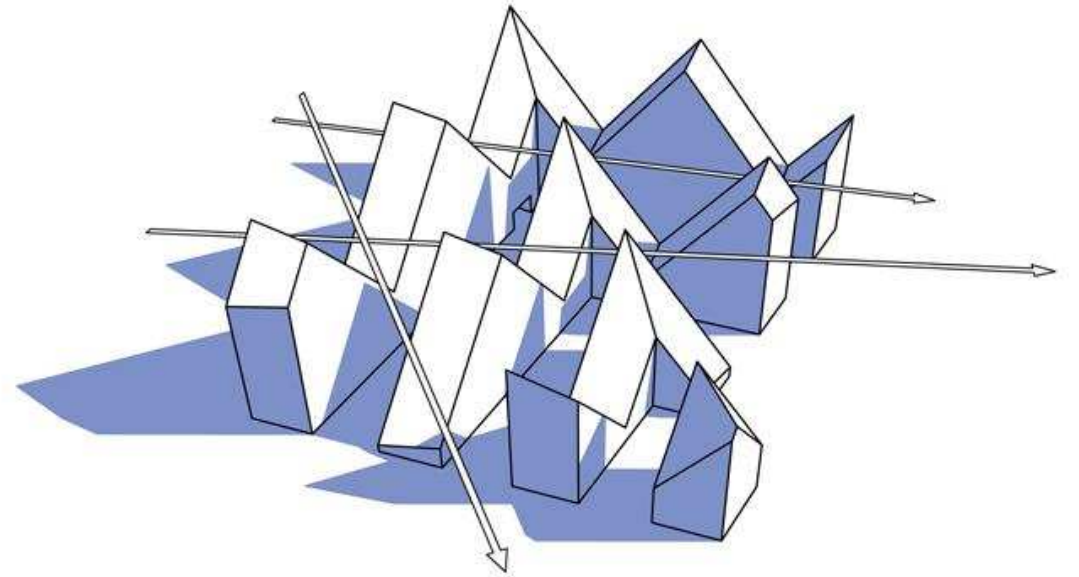




DOKK1- Schmidt, Hammer and Lassen 2015



The Iceberg, Aarhus 2008-2015



ARCHITECTS: CEBRA, JDS, SEARCH, LOUIS PAILLARD ENGINEER: TÆKKER, HAMICONSULT PHOTO: CEBRA, ALLAN TOFT, YANG LIU

The Iceberg, Aarhus 2008-2015



ARCHITECTS: CEBRA, JDS, SEARCH, LOUIS PAILLARD ENGINEER: TÆKKER, HAMICONSULT PHOTO: CEBRA, ALLAN TOFT, YANG LIU

The Iceberg, Aarhus 2008-2015

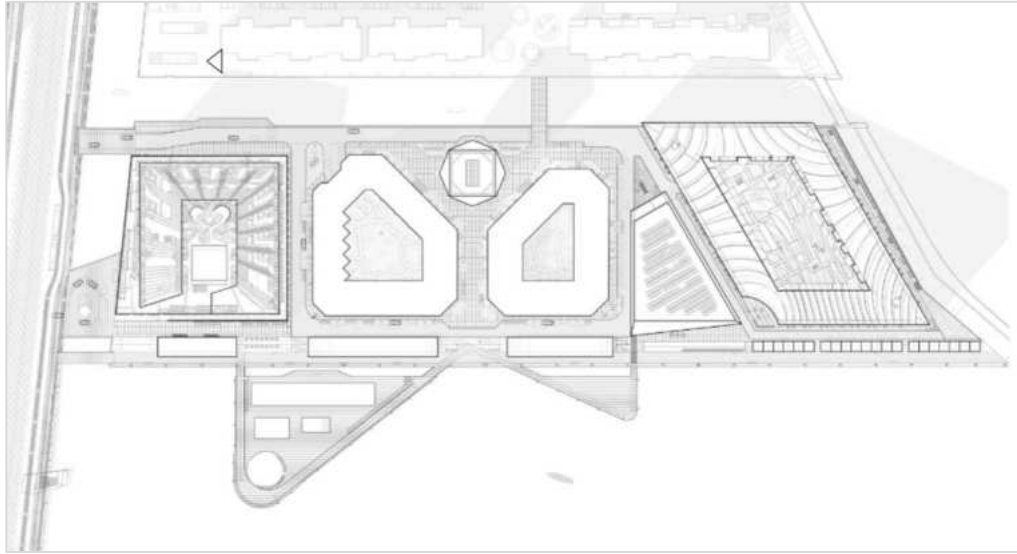


ARCHITECTS: CEBRA, JDS, SEARCH, LOUIS PAILLARD ENGINEER: TÆKKER, HAMICONSULT PHOTO: CEBRA, ALLAN TOFT, YANG LIU

Aarhus kikötői fejlesztések 2008-2023: Aarhus Ø



Aarhus kikötői fejlesztések – BIG 2014 - 2024



The Lighthouse – 3XN



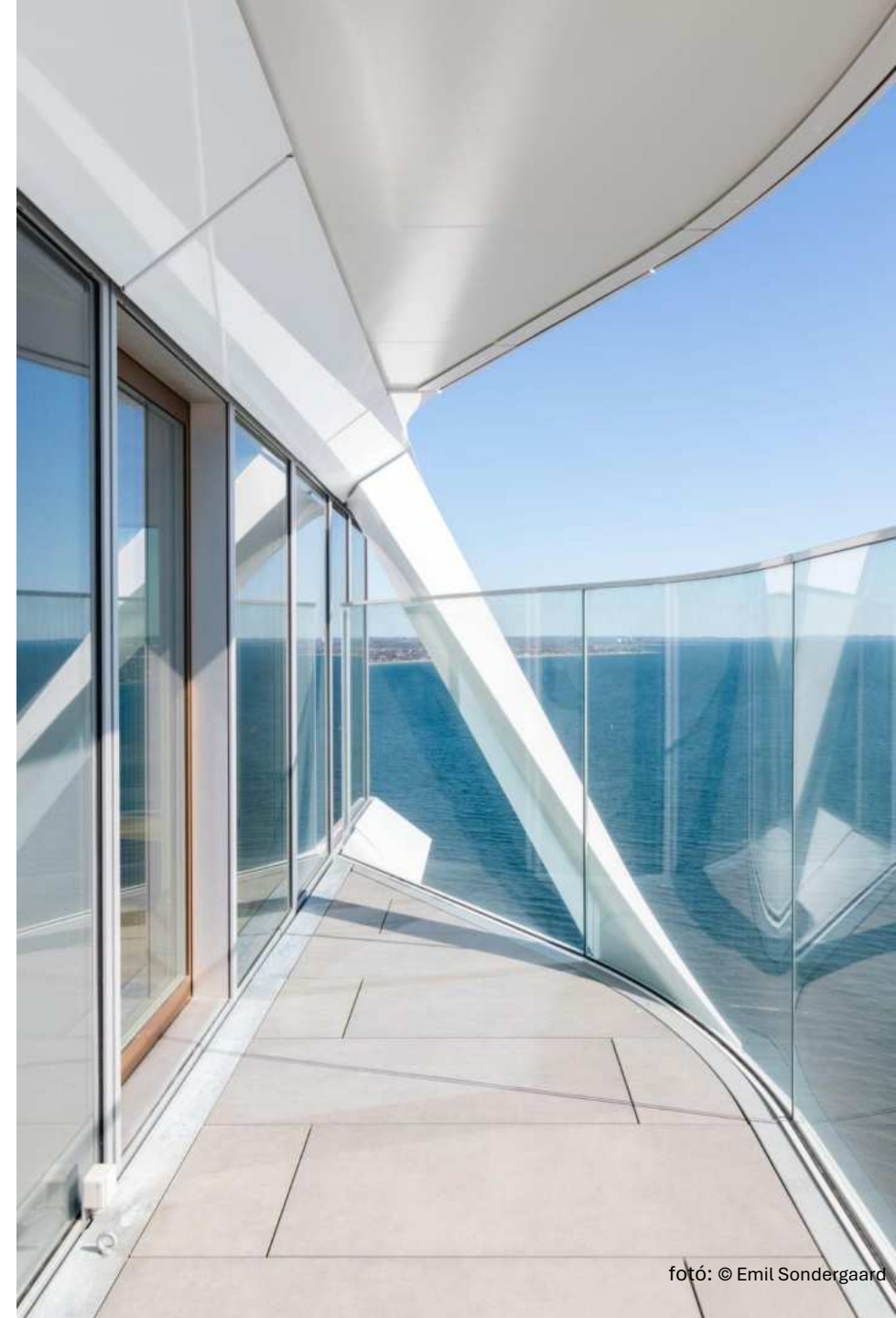
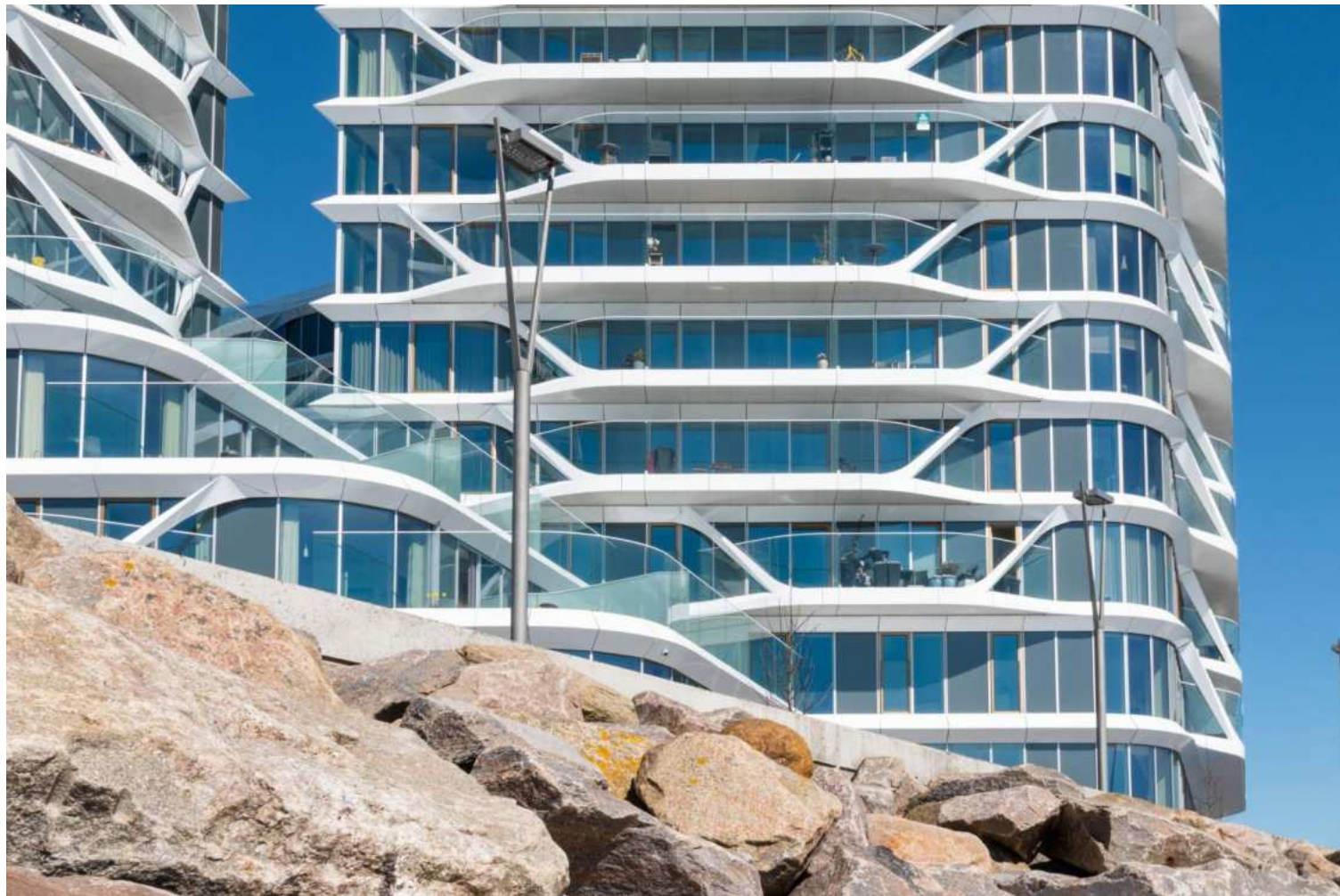
The Lighthouse – 3XN



The Lighthouse – 3XN



The Lighthouse – 3XN



Aarhus School of Architecture – ADEPT 2021



ADEPT

Name: New Aarch

Type: Invited international competition 1st prize

Size: 12.500 m²

Location: Aarhus DK

Year: 2017-2021

Collaborators: Vargo Nielsen Palle, Rolvung & Brøndsted, Triconsult, Steensen Varming, Praksis

Image credits: Rasmus Hjortshøj

Aarhus School of Architecture – ADEPT 2021



Aarhus School of Architecture – ADEPT 2021

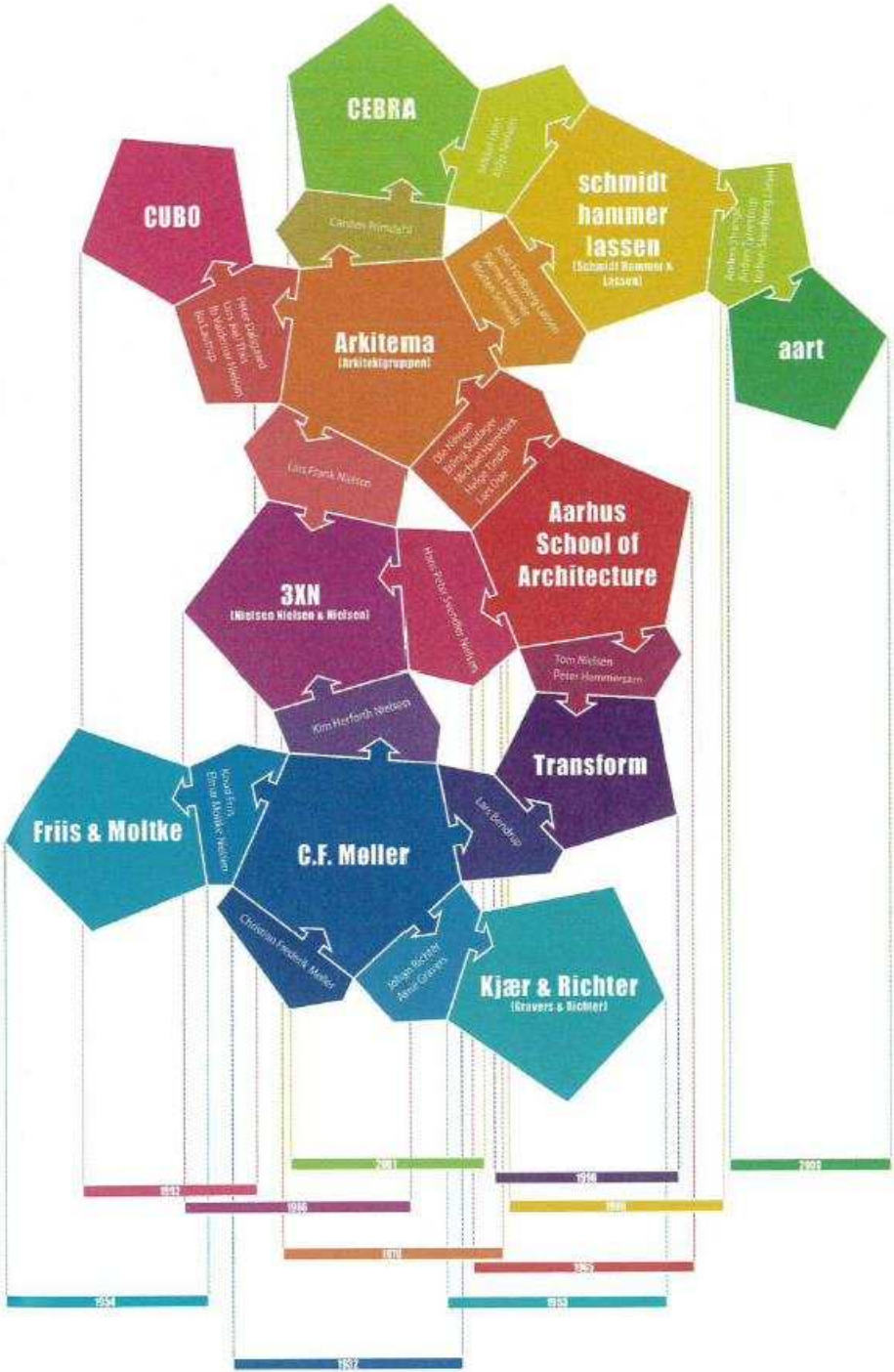




Aarhus School of Architecture – ADEPT 2021



Aarhusi építészirodák kialakulása



SDU Campus, Kolding – Henning Larsen 2014



SDU Campus, Kolding – Henning Larsen 2014



SDU Campus, Kolding – Henning Larsen 2014



Bellevue színház és lakóházak – Arne Jacobsen 1936



Bellevue színház és lakóházak – Arne Jacobsen 1936



Bellevue színház és lakóházak – Arne Jacobsen 1936



Bellevue sorházak – Arne Jacobsen 1950, 1954



Koppenhága

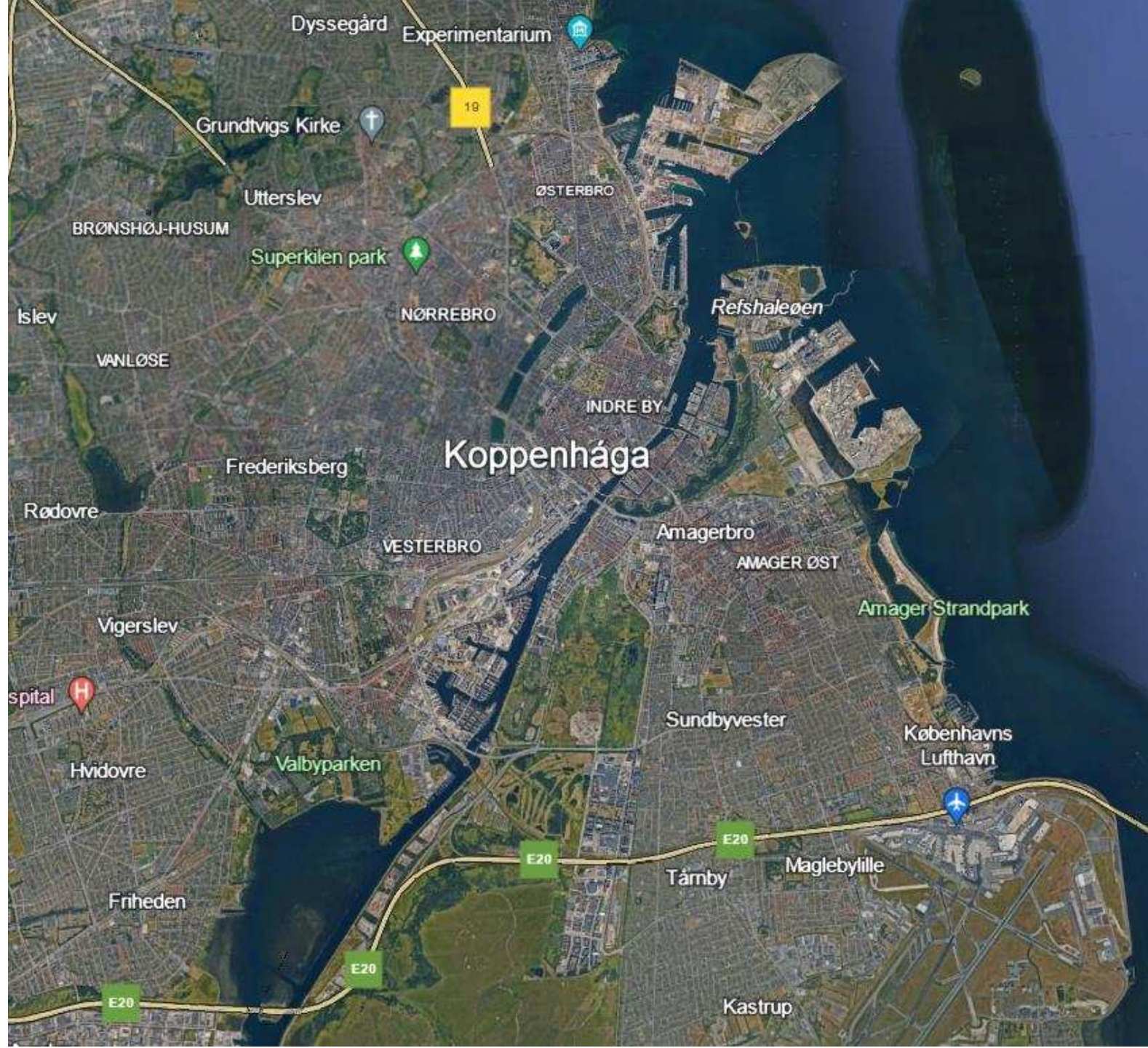
területe 90 km² (525.50 km²)

népesség: 1 366 301 fő

Sjælland és Amager szigeten

World Capital of Architecture 2023

by UNESCO-UIA



Koppenhága vízparti építészet



Koppenhága vízparti építészet



Koppenhága vízparti építészet



BLOX: Danish Architecture Center (DAC) – OMA, 2017



Danish Architecture Center (DAC)



Kaktusz tornyok – BIG, 2017



Koppenhága Északi kikötő fejlesztés – Cobe



The blue city – surrounded and intersected by water.



Koppenhága Északi kikötő fejlesztés – Cobe

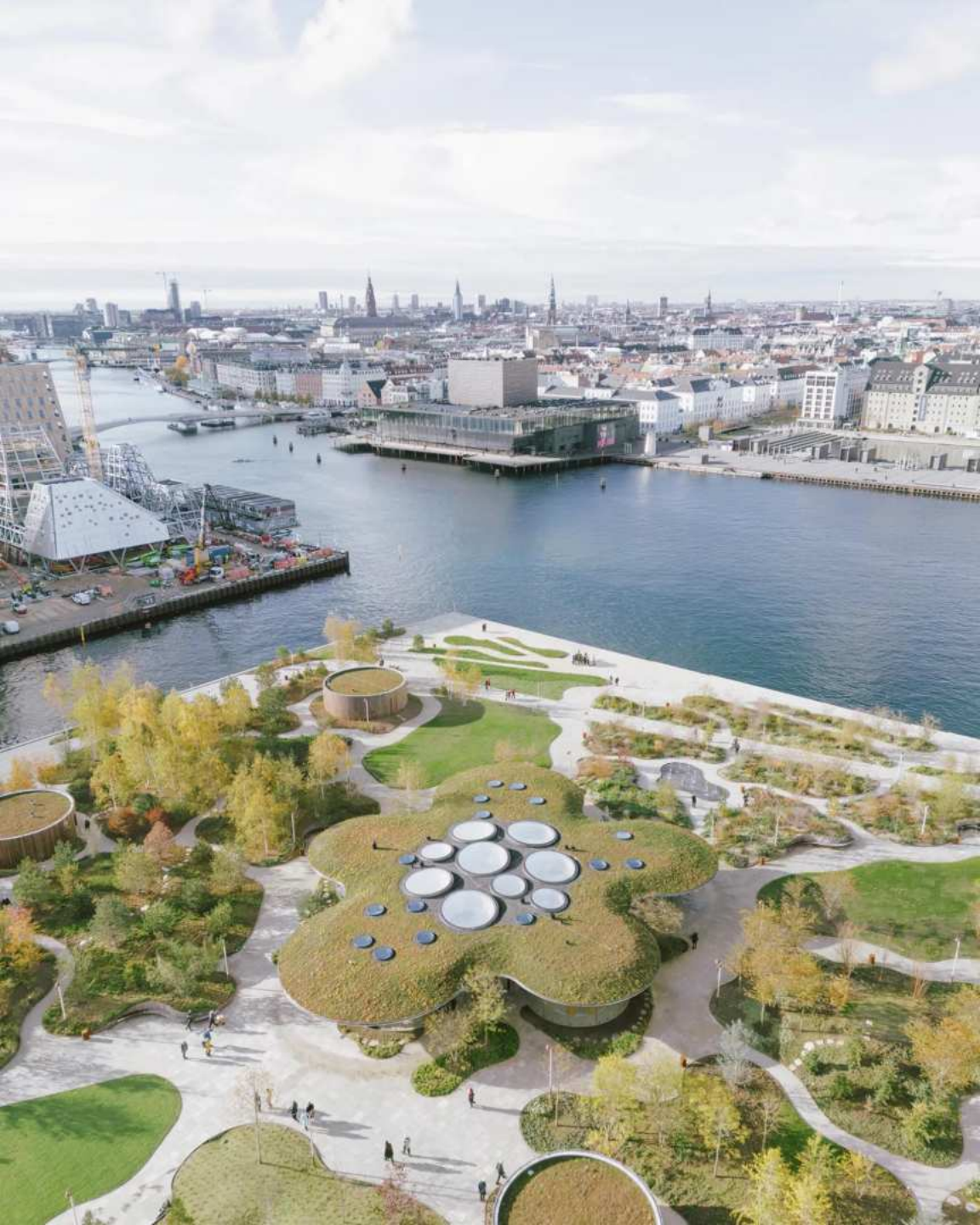


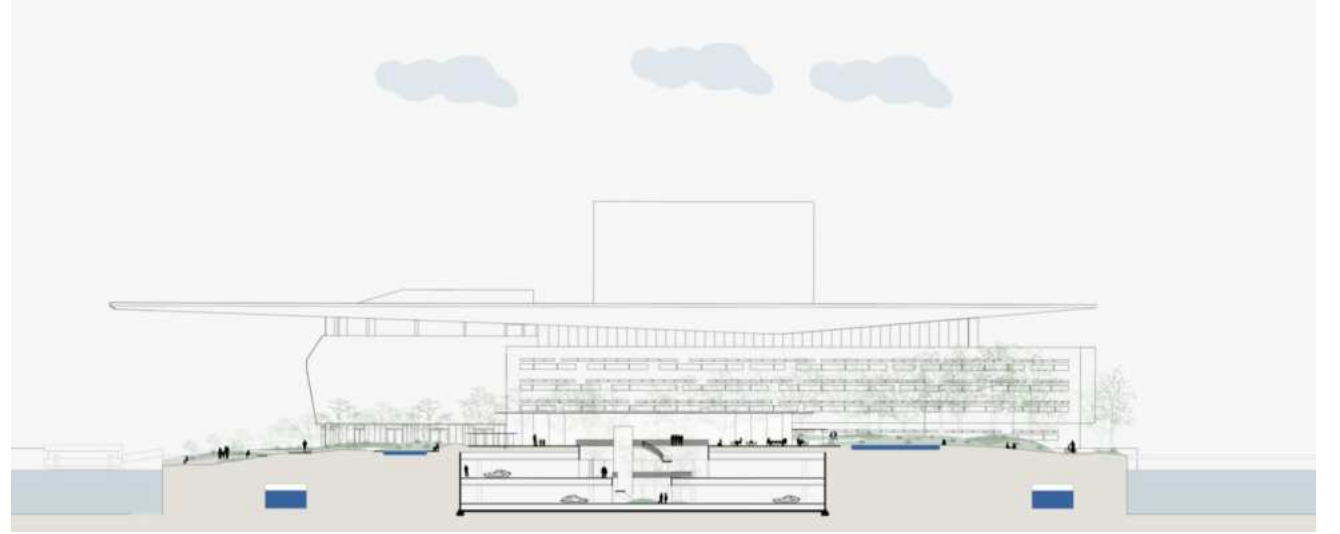
Koppenhága Északi kikötő fejlesztés – Cobe



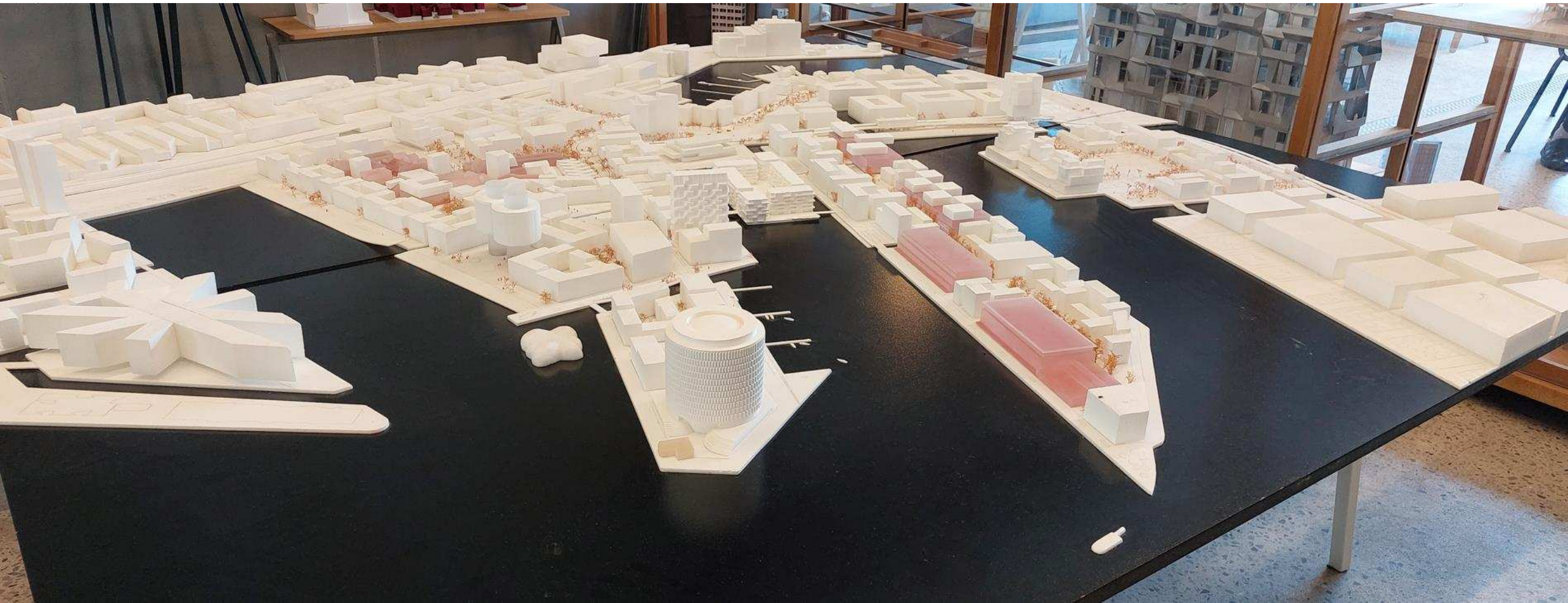








Koppenhága Északi kikötő fejlesztés – Cobe



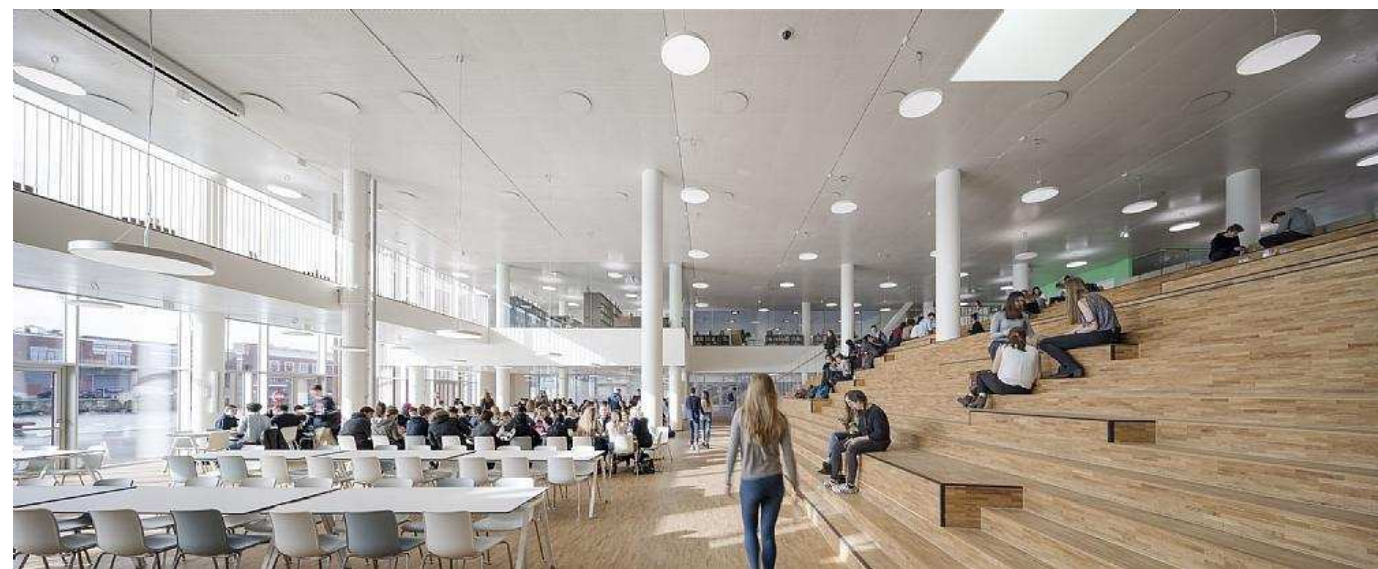
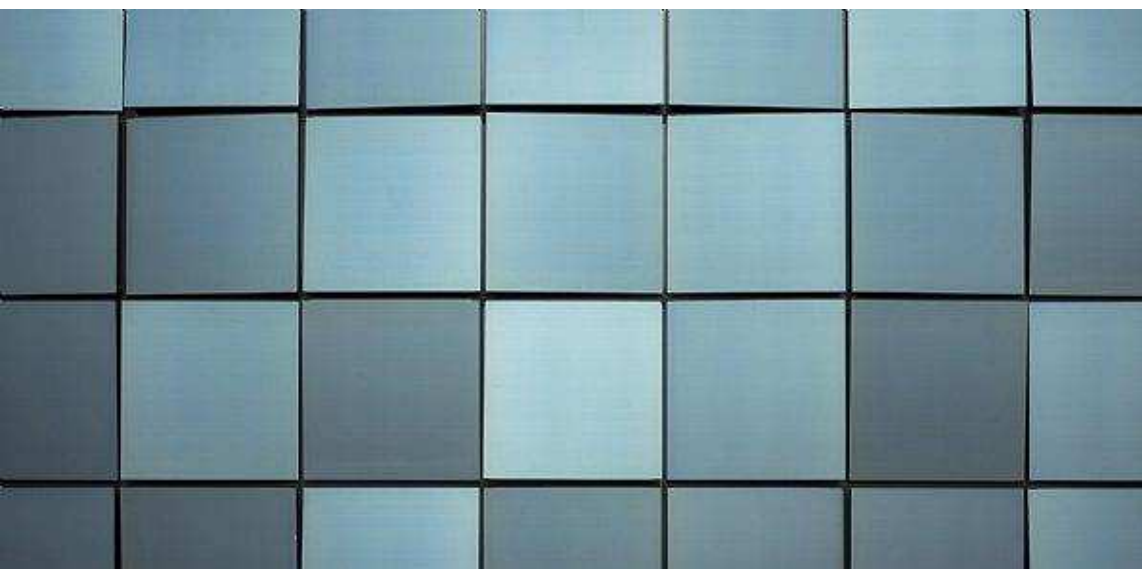
Koppenhága Északi kikötő fejlesztés – Cobe metróállomás és hajókikötő



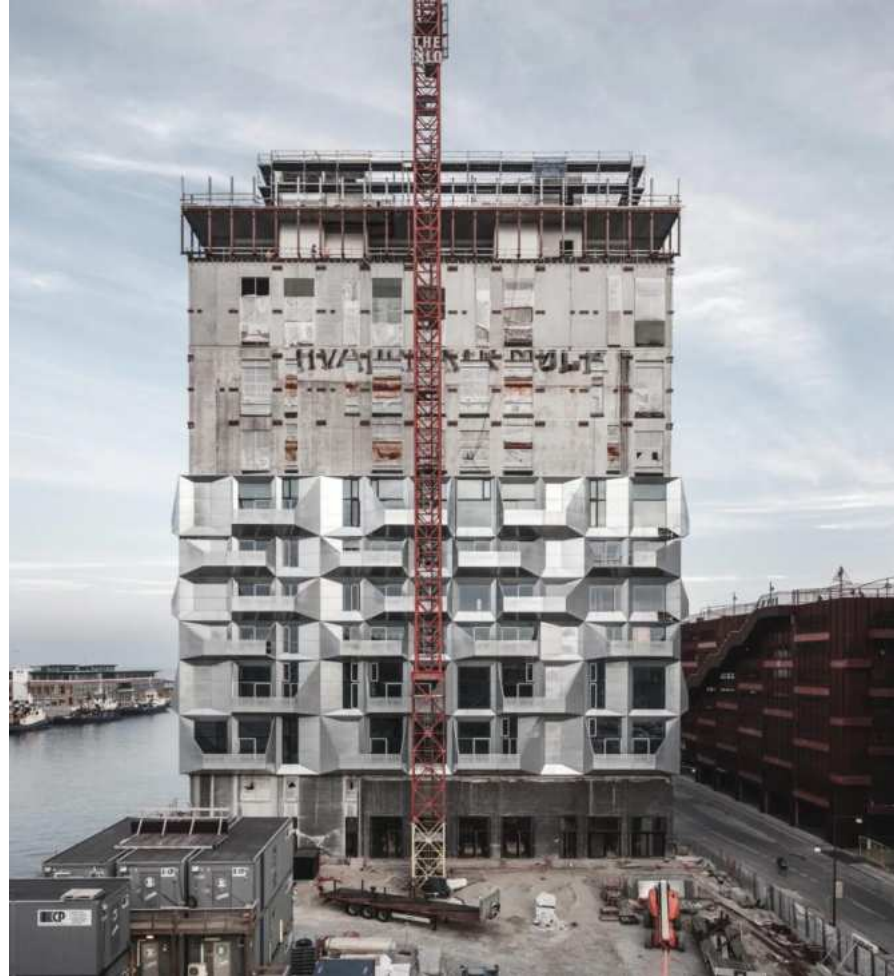
International School – C.F. Møller 2017



International School – C.F. Møller 2017



The Silo – Cobe 2017

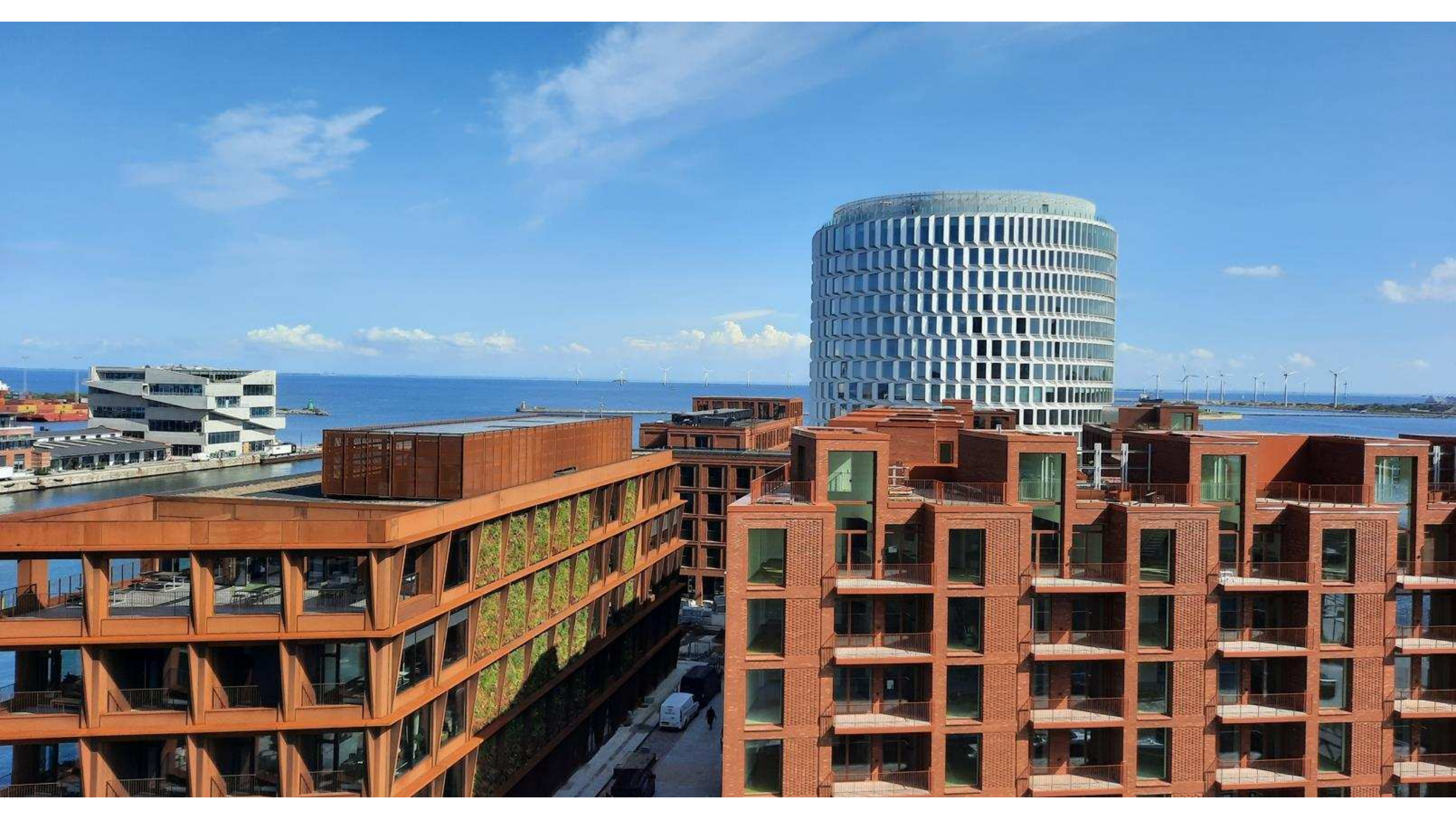


In Copenhagen's Nordhavn district, we have transformed a former grain silo into housing, repurposing 2,740 m³ of existing concrete structure, which stores more than 400 tons of embodied CO₂.



Parkolóház zöldhomlokzat és játszótér - JAJA Architects, 2016





CopenHill – BIG, 2019



CopenHill

COPENHAGEN, DENMARK

2019

CLIENT

AMAGER RESOURCE CENTER |
AMAGER BAKKE FOUNDATION

TPOLOGY

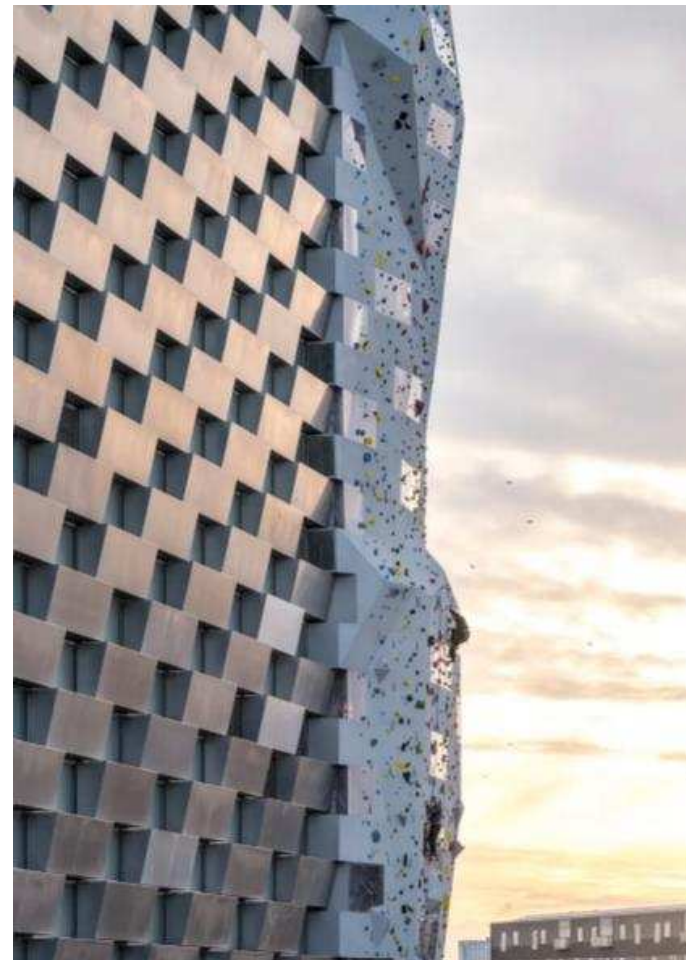
INFRASTRUCTURE

SIZE M2/FT2

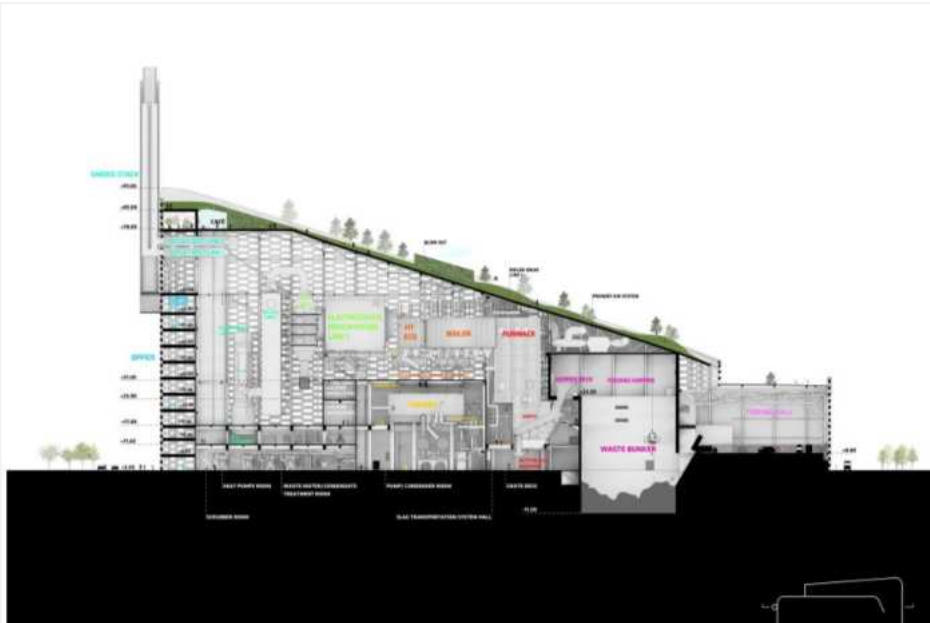
41,000 / 441,324



CopenHill – BIG, 2019



CopenHill – BIG, 2019



CopenHill – BIG, 2019



CopenHill – BIG, 2019





CopenHill – BIG, 2019



Látogatás a BIG irodában



Az új BIG iroda, 2023



BIG LEAP Team: Landscape, Engineering, Architecture and Product designers
Certificates: Danish Sustainability certification, DGNB Gold
FutureCem -25% CO₂, solar and geothermal energy and natural ventilation

Az új BIG iroda, 2023



Az új BIG iroda, 2023



The LEGO House - BIG



LEGO Brand House

BILLUND, DENMARK

2017

CLIENT

KIRKBI A/S | LEGO FOUNDATION
| LEGO GROUP

TYPOLOGY

CULTURE, INTERIORS

SIZE M2/FT2

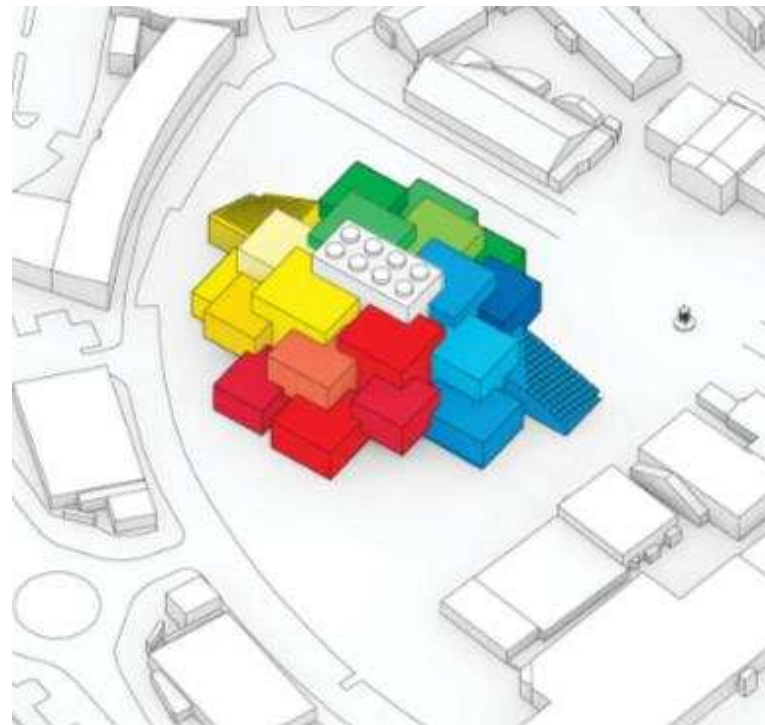
11,960 / 128,737

STATUS

COMPLETED
SHARE



The LEGO House - BIG



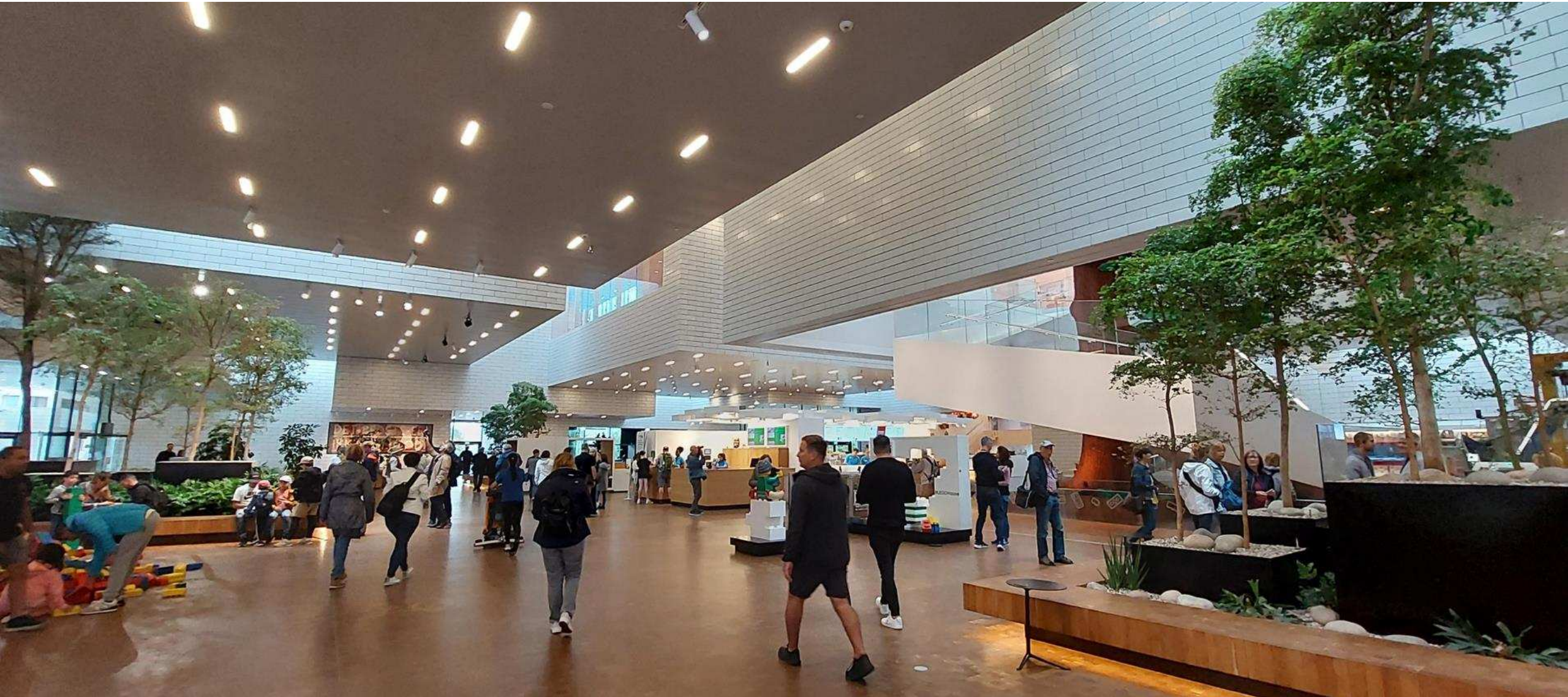
The LEGO House - BIG



The LEGO House - BIG



The LEGO House - BIG



The LEGO House - BIG



The LEGO House - BIG



The LEGO House - BIG



The LEGO House - BIG



The LEGO House - BIG



LEGO Campus - C.F. Møller



Facts

Client

KIRKBI

Construction

K.G. Hansen & Sønner

Address

Billund, Denmark

Engineering

Niras

Size

52,000 m²

Architect

C.F. Møller Architects

Year

2015-2022

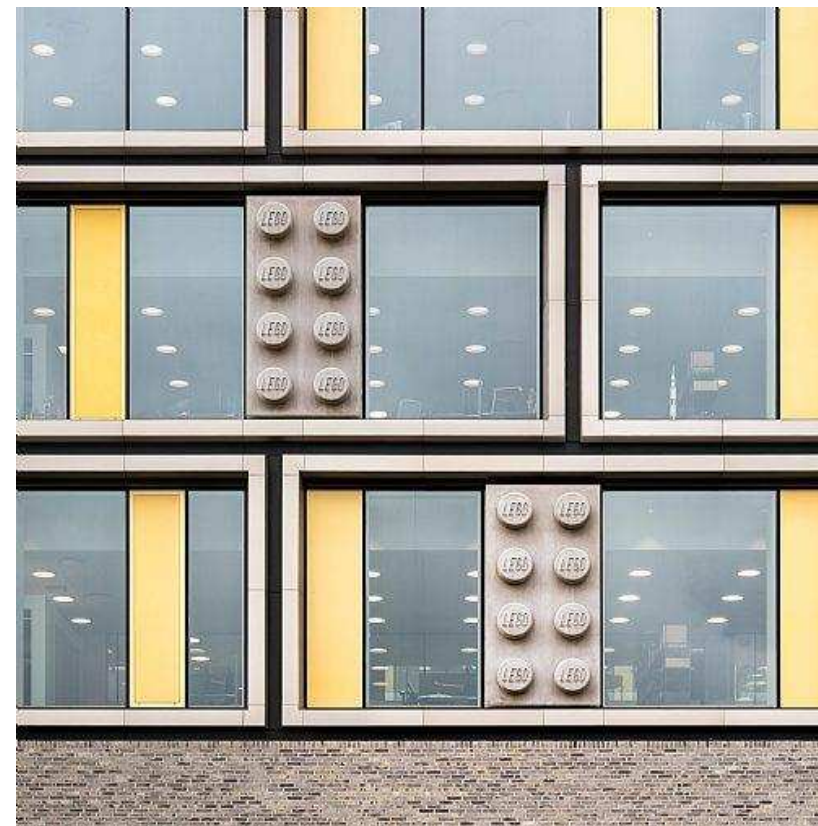
Landscape

C.F. Møller Architects

LEGO Campus - C.F. Møller



LEGO Campus - C.F. Møller



LEGO Campus - C.F. Møller



Köszönöm a figyelmet!



DÁNIAI KORTÁRS ÉPÍTÉSZET – ÚTIBESZÁMOLÓ

Tornóczky Mónika, építész Építésztovábbképző Szabad szemmel: Dánia

